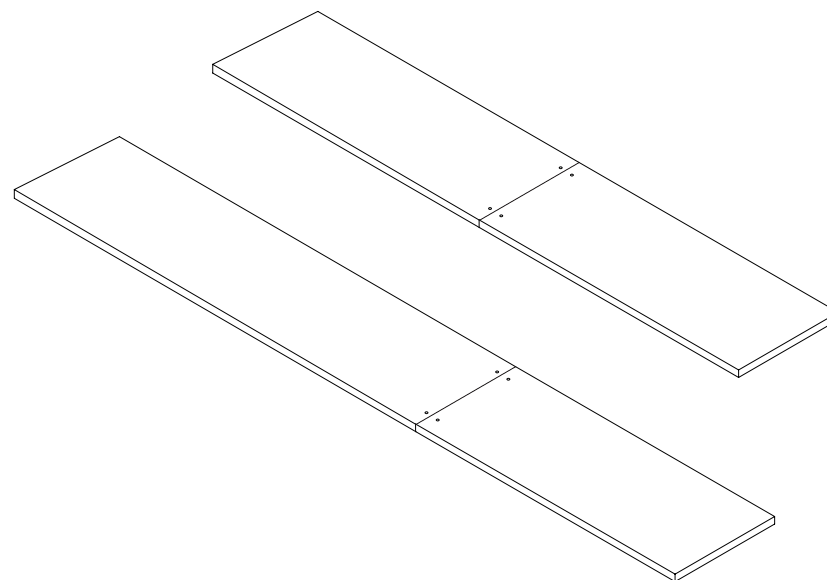


PORTAL

ASSEMBLY INSTRUCTIONS SHELF 244 & 279 cm



ABOUT SHELF 244 AND 279 CM

These are our longest shelves that come in two parts and are joined together with a minifix.

The joint between the shelves should be centered on a shelf ladder.

PLEASE ASSEMBLE THE LONG SHELF IN WALL MOUNTED SHELF LADDERS

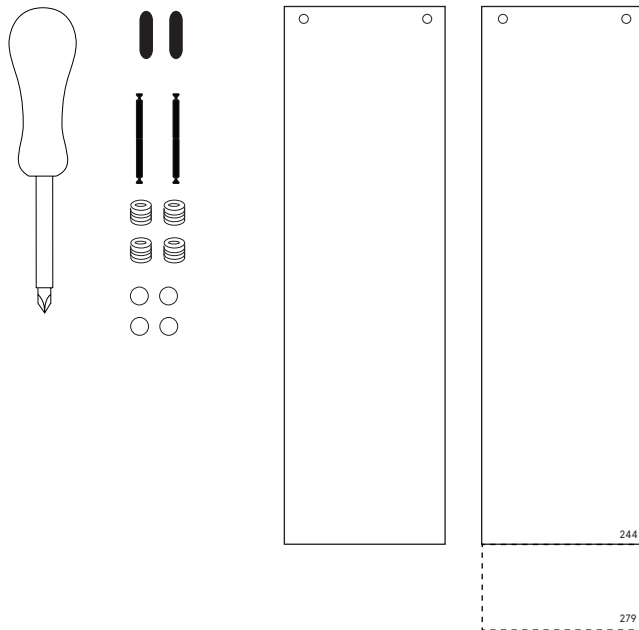
ASSAMBLE SHELF

YOU NEED:

Screw driver

INCLUDED:

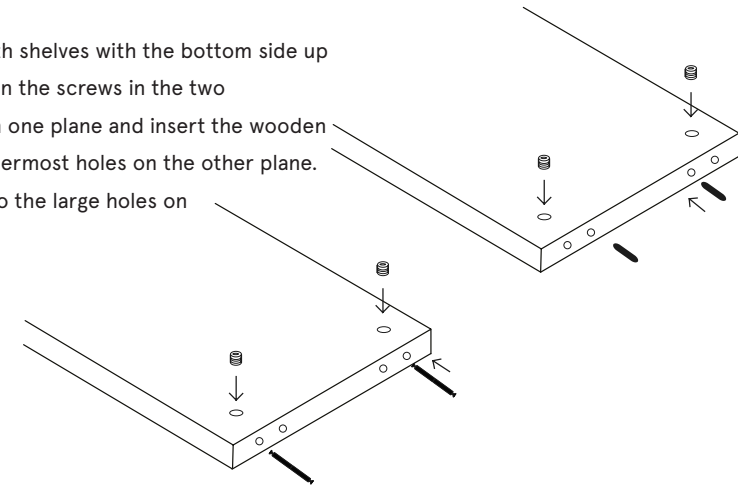
4 x minifix
2 x screws
2 x wood plugs
4 x cap for minifix



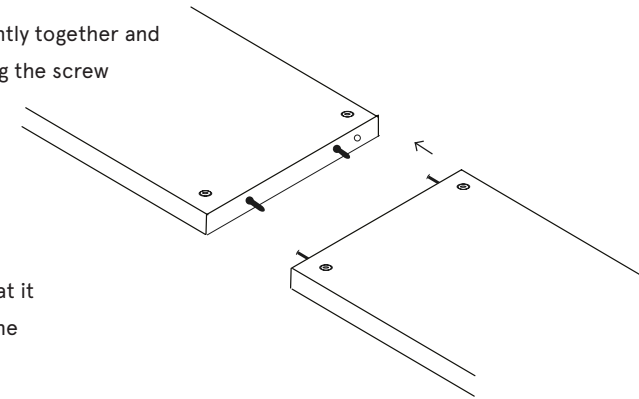
TIP! If you have walls that are not completely straight, try to carefully loosen the minifix to adjust the angle of the shelf.

Email: hello@tonnfurniture.com Call: +46 8 39 65 10 Instagram: [@tonnfurniture](https://www.instagram.com/tonnfurniture) www.tonnfurniture.com

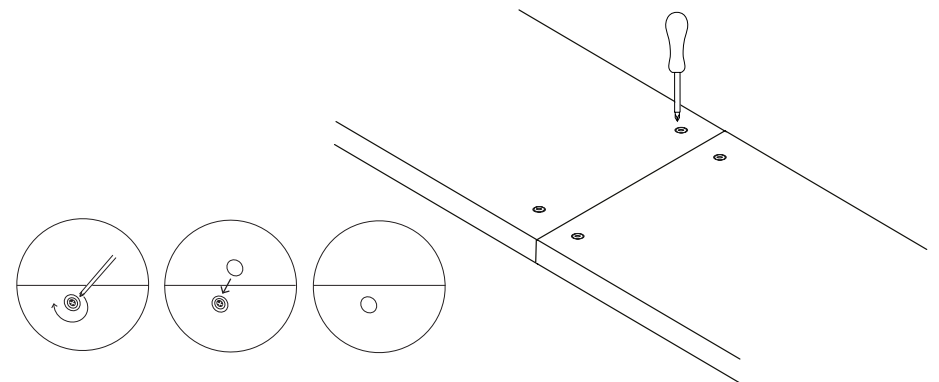
1. Start by placing both shelves with the bottom side up in the shelf. Screw in the screws in the two outermost holes on one plane and insert the wooden plugs in the two innermost holes on the other plane. Attach the minifix to the large holes on the shelf



2. Join the shelves together. Press tightly together and rotate the minifix so it's not blocking the screw



3. Tighten the minifix clockwise so that it locks in the minifix screw. Put on the minifix cap.



4. Congratulations! Now you have a very long shelf! Turn the shelf over and fill with all your precious things.